



# Test Report

Report No : BST16116665A0001Y-1RR-4 Date: Dec.02, 2016

Page 1 of 17

**Applicant** : SHENZHEN E-5CONTINENTS CO., LTD.

**Address** : 4th Floor Building B2, Sunshine Industrial Zone, Hezhou, Xixiang,  
Bao An District, Shenzhen, China

The following sample(s) was /were submitted and identified on behalf of the clients as :

**Sample Name** : WATER DETECTION SENSOR

**Sample Model** : 5C-08, 5C-05, 5C-08W, 5CFS-YZ-1,  
5CFS-YZ-2, 5CFS-YZ-5, 5CFS-P43, 5CFS-P85

**Sample Received Date** : Nov.29,2016

**Testing Period** : Nov.29,2016 To Dec.02, 2016

**Test Requested** : Selected test (s) in the selected parts as requested by client with the RoHS Directive 2011/65/EU.

**Test Method** : Please refer to next page(s).

**Test Result** : Please refer to next page(s).

Signed for and on behalf of

**Andy Zheng/ Technical Director**

This report shall not be altered, increased or deleted. The results shown in this test report refer only to the sample(s) tested. Without written approval of BST, this test report shall not be copied except in full and published as advertisement. BST Physical & Chemical Lab.

**Dongguan BST Testing Co., Ltd.**

A1201-1204 Xinsanqi Of Dongbao Road, Dongcheng District, Tel:400-882-9628 Fax:86-769-23020106  
Dongguan, Guangdong, China E-mail:christina@bst-lab.com Http://www.bst-lab.com Complaints hotline:86-755-26747756



# Test Report

Report No : BST16116665A0001Y-1RR-4 Date: Dec.02, 2016

Page 2 of 17

## Sample Description :

No.	Description	Name
1	Plastic	White Line Skin Outside
2	Plastic	Red Line Skin
3	Plastic	White Line Skin
4	Metal	Wire Core
5	Plastic	White Plastic Shell
6	Metal	Silver Metal
7	PCB	PCB
8	Tape	Cellophane Tape
9	Resistance	Resistance
10	Metal	Solder
11	Triode	Triode

This report shall not be altered, increased or deleted. The results shown in this test report refer only to the sample(s) tested. Without written approval of BST, this test report shall not be copied except in full and published as advertisement. BST Physical & Chemical Lab.

**Dongguan BST Testing Co., Ltd.**

A1201-1204 Xinsanqi Of Dongbao Road, Dongcheng District, Tel:400-882-9628 Fax:86-769-23020106  
Dongguan, Guangdong, China E-mail:christina@bst-lab.com Http://www.bst-lab.com Complaints hotline:86-755-26747756



# Test Report

Report No : BST16116665A0001Y-1RR-4 Date: Dec.02, 2016

Page 3 of 17

## Test Result(No.1):

Test Item(s)	Unit	Test Method (Reference)	Result	MDL	Limit
Cadmium(Cd)	mg/kg	IEC 62321-5:2013, ICP-AES	N.D.	2	100
Lead(Pb)	mg/kg	IEC 62321-5:2013, ICP-AES	N.D.	2	1000
Mercury(Hg)	mg/kg	IEC 62321-4:2013, ICP-AES	N.D.	2	1000
Hexavalent Chromium(CrVI)	mg/kg	IEC 62321-7-1:2015, UV-Vis	N.D.	2	1000
<b>Sum of PBBs</b>	<b>mg/kg</b>	<b>IEC 62321-6:2015, GC-MS</b>	N.D.	--	<b>1000</b>
Monobromobiphenyl	mg/kg	IEC 62321-6:2015, GC-MS	N.D.	5	--
Dibromobiphenyl	mg/kg	IEC 62321-6:2015, GC-MS	N.D.	5	--
Tribromobiphenyl	mg/kg	IEC 62321-6:2015, GC-MS	N.D.	5	--
Tetrabromobiphenyl	mg/kg	IEC 62321-6:2015, GC-MS	N.D.	5	--
Pentabromobiphenyl	mg/kg	IEC 62321-6:2015, GC-MS	N.D.	5	--
Hexabromobiphenyl	mg/kg	IEC 62321-6:2015, GC-MS	N.D.	5	--
Heptabromobiphenyl	mg/kg	IEC 62321-6:2015, GC-MS	N.D.	5	--
Octabromobiphenyl	mg/kg	IEC 62321-6:2015, GC-MS	N.D.	5	--
Nonabromobiphenyl	mg/kg	IEC 62321-6:2015, GC-MS	N.D.	5	--
Decabromobiphenyl	mg/kg	IEC 62321-6:2015, GC-MS	N.D.	5	--
<b>Sum of PBDEs</b>	<b>mg/kg</b>	<b>IEC 62321-6:2015, GC-MS</b>	N.D.	--	<b>1000</b>
Monobromodiphenyl ether	mg/kg	IEC 62321-6:2015, GC-MS	N.D.	5	--
Dibromodiphenyl ether	mg/kg	IEC 62321-6:2015, GC-MS	N.D.	5	--
Tribromodiphenyl ether	mg/kg	IEC 62321-6:2015, GC-MS	N.D.	5	--
Tetrabromodiphenyl ether	mg/kg	IEC 62321-6:2015, GC-MS	N.D.	5	--
Pentabromodiphenyl ether	mg/kg	IEC 62321-6:2015, GC-MS	N.D.	5	--
Hexabromodiphenyl ether	mg/kg	IEC 62321-6:2015, GC-MS	N.D.	5	--
Heptabromodiphenyl ether	mg/kg	IEC 62321-6:2015, GC-MS	N.D.	5	--
Octabromodiphenyl ether	mg/kg	IEC 62321-6:2015, GC-MS	N.D.	5	--
Nonabromodiphenyl ether	mg/kg	IEC 62321-6:2015, GC-MS	N.D.	5	--
Decabromodiphenyl ether	mg/kg	IEC 62321-6:2015, GC-MS	N.D.	5	--
<b>Phthalates</b>					
Dibutyl Phthalate(DBP)	mg/kg	EN14372:2004, GC-MS	N.D.	30	1000
Butyl benzyl phthalate (BBP)	mg/kg	EN14372:2004, GC-MS	N.D.	30	1000
Di-(2-ethylhexyl) Phthalate(DEHP)	mg/kg	EN14372:2004, GC-MS	N.D.	30	1000
Diisobutyl phthalate (DIBP)	mg/kg	EN14372:2004, GC-MS	N.D.	30	1000

This report shall not be altered, increased or deleted. The results shown in this test report refer only to the sample(s) tested. Without written approval of BST, this test report shall not be copied except in full and published as advertisement. BST Physical & Chemical Lab.



# Test Report

Report No : BST16116665A0001Y-1RR-4 Date: Dec.02, 2016

Page 4 of 17

## Test Result(No.2):

Test Item(s)	Unit	Test Method (Reference)	Result	MDL	Limit
Cadmium(Cd)	mg/kg	IEC 62321-5:2013, ICP-AES	N.D.	2	100
Lead(Pb)	mg/kg	IEC 62321-5:2013, ICP-AES	N.D.	2	1000
Mercury(Hg)	mg/kg	IEC 62321-4:2013, ICP-AES	N.D.	2	1000
Hexavalent Chromium(CrVI)	mg/kg	IEC 62321-7-1:2015, UV-Vis	N.D.	2	1000
<b>Sum of PBBs</b>	<b>mg/kg</b>	<b>IEC 62321-6:2015, GC-MS</b>	N.D.	--	<b>1000</b>
Monobromobiphenyl	mg/kg	IEC 62321-6:2015, GC-MS	N.D.	5	--
Dibromobiphenyl	mg/kg	IEC 62321-6:2015, GC-MS	N.D.	5	--
Tribromobiphenyl	mg/kg	IEC 62321-6:2015, GC-MS	N.D.	5	--
Tetrabromobiphenyl	mg/kg	IEC 62321-6:2015, GC-MS	N.D.	5	--
Pentabromobiphenyl	mg/kg	IEC 62321-6:2015, GC-MS	N.D.	5	--
Hexabromobiphenyl	mg/kg	IEC 62321-6:2015, GC-MS	N.D.	5	--
Heptabromobiphenyl	mg/kg	IEC 62321-6:2015, GC-MS	N.D.	5	--
Octabromobiphenyl	mg/kg	IEC 62321-6:2015, GC-MS	N.D.	5	--
Nonabromobiphenyl	mg/kg	IEC 62321-6:2015, GC-MS	N.D.	5	--
Decabromobiphenyl	mg/kg	IEC 62321-6:2015, GC-MS	N.D.	5	--
<b>Sum of PBDEs</b>	<b>mg/kg</b>	<b>IEC 62321-6:2015, GC-MS</b>	N.D.	--	<b>1000</b>
Monobromodiphenyl ether	mg/kg	IEC 62321-6:2015, GC-MS	N.D.	5	--
Dibromodiphenyl ether	mg/kg	IEC 62321-6:2015, GC-MS	N.D.	5	--
Tribromodiphenyl ether	mg/kg	IEC 62321-6:2015, GC-MS	N.D.	5	--
Tetrabromodiphenyl ether	mg/kg	IEC 62321-6:2015, GC-MS	N.D.	5	--
Pentabromodiphenyl ether	mg/kg	IEC 62321-6:2015, GC-MS	N.D.	5	--
Hexabromodiphenyl ether	mg/kg	IEC 62321-6:2015, GC-MS	N.D.	5	--
Heptabromodiphenyl ether	mg/kg	IEC 62321-6:2015, GC-MS	N.D.	5	--
Octabromodiphenyl ether	mg/kg	IEC 62321-6:2015, GC-MS	N.D.	5	--
Nonabromodiphenyl ether	mg/kg	IEC 62321-6:2015, GC-MS	N.D.	5	--
Decabromodiphenyl ether	mg/kg	IEC 62321-6:2015, GC-MS	N.D.	5	--
<b>Phthalates</b>					
Dibutyl Phthalate(DBP)	mg/kg	EN14372:2004, GC-MS	N.D.	30	1000
Butyl benzyl phthalate (BBP)	mg/kg	EN14372:2004, GC-MS	N.D.	30	1000
Di-(2-ethylhexyl) Phthalate(DEHP)	mg/kg	EN14372:2004, GC-MS	N.D.	30	1000
Diisobutyl phthalate (DIBP)	mg/kg	EN14372:2004, GC-MS	N.D.	30	1000

This report shall not be altered, increased or deleted. The results shown in this test report refer only to the sample(s) tested. Without written approval of BST, this test report shall not be copied except in full and published as advertisement. BST Physical & Chemical Lab.



# Test Report

Report No : BST16116665A0001Y-1RR-4 Date: Dec.02, 2016

Page 5 of 17

## Test Result(No.3):

Test Item(s)	Unit	Test Method (Reference)	Result	MDL	Limit
Cadmium(Cd)	mg/kg	IEC 62321-5:2013, ICP-AES	N.D.	2	100
Lead(Pb)	mg/kg	IEC 62321-5:2013, ICP-AES	N.D.	2	1000
Mercury(Hg)	mg/kg	IEC 62321-4:2013, ICP-AES	N.D.	2	1000
Hexavalent Chromium(CrVI)	mg/kg	IEC 62321-7-1:2015, UV-Vis	N.D.	2	1000
<b>Sum of PBBs</b>	<b>mg/kg</b>	<b>IEC 62321-6:2015, GC-MS</b>	N.D.	--	<b>1000</b>
Monobromobiphenyl	mg/kg	IEC 62321-6:2015, GC-MS	N.D.	5	--
Dibromobiphenyl	mg/kg	IEC 62321-6:2015, GC-MS	N.D.	5	--
Tribromobiphenyl	mg/kg	IEC 62321-6:2015, GC-MS	N.D.	5	--
Tetrabromobiphenyl	mg/kg	IEC 62321-6:2015, GC-MS	N.D.	5	--
Pentabromobiphenyl	mg/kg	IEC 62321-6:2015, GC-MS	N.D.	5	--
Hexabromobiphenyl	mg/kg	IEC 62321-6:2015, GC-MS	N.D.	5	--
Heptabromobiphenyl	mg/kg	IEC 62321-6:2015, GC-MS	N.D.	5	--
Octabromobiphenyl	mg/kg	IEC 62321-6:2015, GC-MS	N.D.	5	--
Nonabromobiphenyl	mg/kg	IEC 62321-6:2015, GC-MS	N.D.	5	--
Decabromobiphenyl	mg/kg	IEC 62321-6:2015, GC-MS	N.D.	5	--
<b>Sum of PBDEs</b>	<b>mg/kg</b>	<b>IEC 62321-6:2015, GC-MS</b>	N.D.	--	<b>1000</b>
Monobromodiphenyl ether	mg/kg	IEC 62321-6:2015, GC-MS	N.D.	5	--
Dibromodiphenyl ether	mg/kg	IEC 62321-6:2015, GC-MS	N.D.	5	--
Tribromodiphenyl ether	mg/kg	IEC 62321-6:2015, GC-MS	N.D.	5	--
Tetrabromodiphenyl ether	mg/kg	IEC 62321-6:2015, GC-MS	N.D.	5	--
Pentabromodiphenyl ether	mg/kg	IEC 62321-6:2015, GC-MS	N.D.	5	--
Hexabromodiphenyl ether	mg/kg	IEC 62321-6:2015, GC-MS	N.D.	5	--
Heptabromodiphenyl ether	mg/kg	IEC 62321-6:2015, GC-MS	N.D.	5	--
Octabromodiphenyl ether	mg/kg	IEC 62321-6:2015, GC-MS	N.D.	5	--
Nonabromodiphenyl ether	mg/kg	IEC 62321-6:2015, GC-MS	N.D.	5	--
Decabromodiphenyl ether	mg/kg	IEC 62321-6:2015, GC-MS	N.D.	5	--
<b>Phthalates</b>					
Dibutyl Phthalate(DBP)	mg/kg	EN14372:2004, GC-MS	N.D.	30	1000
Butyl benzyl phthalate (BBP)	mg/kg	EN14372:2004, GC-MS	N.D.	30	1000
Di-(2-ethylhexyl) Phthalate(DEHP)	mg/kg	EN14372:2004, GC-MS	N.D.	30	1000
Diisobutyl phthalate (DIBP)	mg/kg	EN14372:2004, GC-MS	N.D.	30	1000

This report shall not be altered, increased or deleted. The results shown in this test report refer only to the sample(s) tested. Without written approval of BST, this test report shall not be copied except in full and published as advertisement. BST Physical & Chemical Lab.



# Test Report

Report No : BST16116665A0001Y-1RR-4 Date: Dec.02, 2016

Page 6 of 17

## Test Result(No.4):

Test Item(s)	Unit	Test Method (Reference)	Result	MDL	Limit
Cadmium(Cd)	mg/kg	IEC 62321-5:2013, ICP-AES	N.D.	2	100
Lead(Pb)	mg/kg	IEC 62321-5:2013, ICP-AES	N.D.	2	1000
Mercury(Hg)	mg/kg	IEC 62321-4:2013, ICP-AES	N.D.	2	1000
Hexavalent Chromium(CrVI)	mg/kg	IEC 62321-7-1:2015, UV-Vis	N.D.	2	1000
<b>Sum of PBBs</b>	<b>mg/kg</b>	<b>IEC 62321-6:2015, GC-MS</b>	--	--	<b>1000</b>
Monobromobiphenyl	mg/kg	IEC 62321-6:2015, GC-MS	--	5	--
Dibromobiphenyl	mg/kg	IEC 62321-6:2015, GC-MS	--	5	--
Tribromobiphenyl	mg/kg	IEC 62321-6:2015, GC-MS	--	5	--
Tetrabromobiphenyl	mg/kg	IEC 62321-6:2015, GC-MS	--	5	--
Pentabromobiphenyl	mg/kg	IEC 62321-6:2015, GC-MS	--	5	--
Hexabromobiphenyl	mg/kg	IEC 62321-6:2015, GC-MS	--	5	--
Heptabromobiphenyl	mg/kg	IEC 62321-6:2015, GC-MS	--	5	--
Octabromobiphenyl	mg/kg	IEC 62321-6:2015, GC-MS	--	5	--
Nonabromobiphenyl	mg/kg	IEC 62321-6:2015, GC-MS	--	5	--
Decabromobiphenyl	mg/kg	IEC 62321-6:2015, GC-MS	--	5	--
<b>Sum of PBDEs</b>	<b>mg/kg</b>	<b>IEC 62321-6:2015, GC-MS</b>	--	--	<b>1000</b>
Monobromodiphenyl ether	mg/kg	IEC 62321-6:2015, GC-MS	--	5	--
Dibromodiphenyl ether	mg/kg	IEC 62321-6:2015, GC-MS	--	5	--
Tribromodiphenyl ether	mg/kg	IEC 62321-6:2015, GC-MS	--	5	--
Tetrabromodiphenyl ether	mg/kg	IEC 62321-6:2015, GC-MS	--	5	--
Pentabromodiphenyl ether	mg/kg	IEC 62321-6:2015, GC-MS	--	5	--
Hexabromodiphenyl ether	mg/kg	IEC 62321-6:2015, GC-MS	--	5	--
Heptabromodiphenyl ether	mg/kg	IEC 62321-6:2015, GC-MS	--	5	--
Octabromodiphenyl ether	mg/kg	IEC 62321-6:2015, GC-MS	--	5	--
Nonabromodiphenyl ether	mg/kg	IEC 62321-6:2015, GC-MS	--	5	--
Decabromodiphenyl ether	mg/kg	IEC 62321-6:2015, GC-MS	--	5	--
<b>Phthalates</b>					
Dibutyl Phthalate(DBP)	mg/kg	EN14372:2004, GC-MS	--	30	1000
Butyl benzyl phthalate (BBP)	mg/kg	EN14372:2004, GC-MS	--	30	1000
Di-(2-ethylhexyl) Phthalate(DEHP)	mg/kg	EN14372:2004, GC-MS	--	30	1000
Diisobutyl phthalate (DIBP)	mg/kg	EN14372:2004, GC-MS	--	30	1000

This report shall not be altered, increased or deleted. The results shown in this test report refer only to the sample(s) tested. Without written approval of BST, this test report shall not be copied except in full and published as advertisement. BST Physical & Chemical Lab.



# Test Report

Report No : BST16116665A0001Y-1RR-4 Date: Dec.02, 2016

Page 7 of 17

## Test Result(No.5):

Test Item(s)	Unit	Test Method (Reference)	Result	MDL	Limit
Cadmium(Cd)	mg/kg	IEC 62321-5:2013, ICP-AES	N.D.	2	100
Lead(Pb)	mg/kg	IEC 62321-5:2013, ICP-AES	N.D.	2	1000
Mercury(Hg)	mg/kg	IEC 62321-4:2013, ICP-AES	N.D.	2	1000
Hexavalent Chromium(CrVI)	mg/kg	IEC 62321-7-1:2015, UV-Vis	N.D.	2	1000
<b>Sum of PBBs</b>	<b>mg/kg</b>	<b>IEC 62321-6:2015, GC-MS</b>	N.D.	--	<b>1000</b>
Monobromobiphenyl	mg/kg	IEC 62321-6:2015, GC-MS	N.D.	5	--
Dibromobiphenyl	mg/kg	IEC 62321-6:2015, GC-MS	N.D.	5	--
Tribromobiphenyl	mg/kg	IEC 62321-6:2015, GC-MS	N.D.	5	--
Tetrabromobiphenyl	mg/kg	IEC 62321-6:2015, GC-MS	N.D.	5	--
Pentabromobiphenyl	mg/kg	IEC 62321-6:2015, GC-MS	N.D.	5	--
Hexabromobiphenyl	mg/kg	IEC 62321-6:2015, GC-MS	N.D.	5	--
Heptabromobiphenyl	mg/kg	IEC 62321-6:2015, GC-MS	N.D.	5	--
Octabromobiphenyl	mg/kg	IEC 62321-6:2015, GC-MS	N.D.	5	--
Nonabromobiphenyl	mg/kg	IEC 62321-6:2015, GC-MS	N.D.	5	--
Decabromobiphenyl	mg/kg	IEC 62321-6:2015, GC-MS	N.D.	5	--
<b>Sum of PBDEs</b>	<b>mg/kg</b>	<b>IEC 62321-6:2015, GC-MS</b>	N.D.	--	<b>1000</b>
Monobromodiphenyl ether	mg/kg	IEC 62321-6:2015, GC-MS	N.D.	5	--
Dibromodiphenyl ether	mg/kg	IEC 62321-6:2015, GC-MS	N.D.	5	--
Tribromodiphenyl ether	mg/kg	IEC 62321-6:2015, GC-MS	N.D.	5	--
Tetrabromodiphenyl ether	mg/kg	IEC 62321-6:2015, GC-MS	N.D.	5	--
Pentabromodiphenyl ether	mg/kg	IEC 62321-6:2015, GC-MS	N.D.	5	--
Hexabromodiphenyl ether	mg/kg	IEC 62321-6:2015, GC-MS	N.D.	5	--
Heptabromodiphenyl ether	mg/kg	IEC 62321-6:2015, GC-MS	N.D.	5	--
Octabromodiphenyl ether	mg/kg	IEC 62321-6:2015, GC-MS	N.D.	5	--
Nonabromodiphenyl ether	mg/kg	IEC 62321-6:2015, GC-MS	N.D.	5	--
Decabromodiphenyl ether	mg/kg	IEC 62321-6:2015, GC-MS	N.D.	5	--
<b>Phthalates</b>					
Dibutyl Phthalate(DBP)	mg/kg	EN14372:2004, GC-MS	N.D.	30	1000
Butyl benzyl phthalate (BBP)	mg/kg	EN14372:2004, GC-MS	N.D.	30	1000
Di-(2-ethylhexyl) Phthalate(DEHP)	mg/kg	EN14372:2004, GC-MS	N.D.	30	1000
Diisobutyl phthalate (DIBP)	mg/kg	EN14372:2004, GC-MS	N.D.	30	1000

This report shall not be altered, increased or deleted. The results shown in this test report refer only to the sample(s) tested. Without written approval of BST, this test report shall not be copied except in full and published as advertisement. BST Physical & Chemical Lab.





# Test Report

Report No : BST16116665A0001Y-1RR-4 Date: Dec.02, 2016

Page 8 of 17

## Test Result(No.6):

Test Item(s)	Unit	Test Method (Reference)	Result	MDL	Limit
Cadmium(Cd)	mg/kg	IEC 62321-5:2013, ICP-AES	N.D.	2	100
Lead(Pb)	mg/kg	IEC 62321-5:2013, ICP-AES	N.D.	2	1000
Mercury(Hg)	mg/kg	IEC 62321-4:2013, ICP-AES	N.D.	2	1000
Hexavalent Chromium(CrVI)	mg/kg	IEC 62321-7-1:2015, UV-Vis	N.D.	2	1000
<b>Sum of PBBs</b>	<b>mg/kg</b>	<b>IEC 62321-6:2015, GC-MS</b>	--	--	<b>1000</b>
Monobromobiphenyl	mg/kg	IEC 62321-6:2015, GC-MS	--	5	--
Dibromobiphenyl	mg/kg	IEC 62321-6:2015, GC-MS	--	5	--
Tribromobiphenyl	mg/kg	IEC 62321-6:2015, GC-MS	--	5	--
Tetrabromobiphenyl	mg/kg	IEC 62321-6:2015, GC-MS	--	5	--
Pentabromobiphenyl	mg/kg	IEC 62321-6:2015, GC-MS	--	5	--
Hexabromobiphenyl	mg/kg	IEC 62321-6:2015, GC-MS	--	5	--
Heptabromobiphenyl	mg/kg	IEC 62321-6:2015, GC-MS	--	5	--
Octabromobiphenyl	mg/kg	IEC 62321-6:2015, GC-MS	--	5	--
Nonabromobiphenyl	mg/kg	IEC 62321-6:2015, GC-MS	--	5	--
Decabromobiphenyl	mg/kg	IEC 62321-6:2015, GC-MS	--	5	--
<b>Sum of PBDEs</b>	<b>mg/kg</b>	<b>IEC 62321-6:2015, GC-MS</b>	--	--	<b>1000</b>
Monobromodiphenyl ether	mg/kg	IEC 62321-6:2015, GC-MS	--	5	--
Dibromodiphenyl ether	mg/kg	IEC 62321-6:2015, GC-MS	--	5	--
Tribromodiphenyl ether	mg/kg	IEC 62321-6:2015, GC-MS	--	5	--
Tetrabromodiphenyl ether	mg/kg	IEC 62321-6:2015, GC-MS	--	5	--
Pentabromodiphenyl ether	mg/kg	IEC 62321-6:2015, GC-MS	--	5	--
Hexabromodiphenyl ether	mg/kg	IEC 62321-6:2015, GC-MS	--	5	--
Heptabromodiphenyl ether	mg/kg	IEC 62321-6:2015, GC-MS	--	5	--
Octabromodiphenyl ether	mg/kg	IEC 62321-6:2015, GC-MS	--	5	--
Nonabromodiphenyl ether	mg/kg	IEC 62321-6:2015, GC-MS	--	5	--
Decabromodiphenyl ether	mg/kg	IEC 62321-6:2015, GC-MS	--	5	--
<b>Phthalates</b>					
Dibutyl Phthalate(DBP)	mg/kg	EN14372:2004, GC-MS	--	30	1000
Butyl benzyl phthalate (BBP)	mg/kg	EN14372:2004, GC-MS	--	30	1000
Di-(2-ethylhexyl) Phthalate(DEHP)	mg/kg	EN14372:2004, GC-MS	--	30	1000
Diisobutyl phthalate (DIBP)	mg/kg	EN14372:2004, GC-MS	--	30	1000

This report shall not be altered, increased or deleted. The results shown in this test report refer only to the sample(s) tested. Without written approval of BST, this test report shall not be copied except in full and published as advertisement. BST Physical & Chemical Lab.





# Test Report

Report No : BST16116665A0001Y-1RR-4 Date: Dec.02, 2016

Page 9 of 17

## Test Result(No.7):

Test Item(s)	Unit	Test Method (Reference)	Result	MDL	Limit
Cadmium(Cd)	mg/kg	IEC 62321-5:2013, ICP-AES	N.D.	2	100
Lead(Pb)	mg/kg	IEC 62321-5:2013, ICP-AES	N.D.	2	1000
Mercury(Hg)	mg/kg	IEC 62321-4:2013, ICP-AES	N.D.	2	1000
Hexavalent Chromium(CrVI)	mg/kg	IEC 62321-7-1:2015, UV-Vis	N.D.	2	1000
<b>Sum of PBBs</b>	<b>mg/kg</b>	<b>IEC 62321-6:2015, GC-MS</b>	N.D.	--	<b>1000</b>
Monobromobiphenyl	mg/kg	IEC 62321-6:2015, GC-MS	N.D.	5	--
Dibromobiphenyl	mg/kg	IEC 62321-6:2015, GC-MS	N.D.	5	--
Tribromobiphenyl	mg/kg	IEC 62321-6:2015, GC-MS	N.D.	5	--
Tetrabromobiphenyl	mg/kg	IEC 62321-6:2015, GC-MS	N.D.	5	--
Pentabromobiphenyl	mg/kg	IEC 62321-6:2015, GC-MS	N.D.	5	--
Hexabromobiphenyl	mg/kg	IEC 62321-6:2015, GC-MS	N.D.	5	--
Heptabromobiphenyl	mg/kg	IEC 62321-6:2015, GC-MS	N.D.	5	--
Octabromobiphenyl	mg/kg	IEC 62321-6:2015, GC-MS	N.D.	5	--
Nonabromobiphenyl	mg/kg	IEC 62321-6:2015, GC-MS	N.D.	5	--
Decabromobiphenyl	mg/kg	IEC 62321-6:2015, GC-MS	N.D.	5	--
<b>Sum of PBDEs</b>	<b>mg/kg</b>	<b>IEC 62321-6:2015, GC-MS</b>	N.D.	--	<b>1000</b>
Monobromodiphenyl ether	mg/kg	IEC 62321-6:2015, GC-MS	N.D.	5	--
Dibromodiphenyl ether	mg/kg	IEC 62321-6:2015, GC-MS	N.D.	5	--
Tribromodiphenyl ether	mg/kg	IEC 62321-6:2015, GC-MS	N.D.	5	--
Tetrabromodiphenyl ether	mg/kg	IEC 62321-6:2015, GC-MS	N.D.	5	--
Pentabromodiphenyl ether	mg/kg	IEC 62321-6:2015, GC-MS	N.D.	5	--
Hexabromodiphenyl ether	mg/kg	IEC 62321-6:2015, GC-MS	N.D.	5	--
Heptabromodiphenyl ether	mg/kg	IEC 62321-6:2015, GC-MS	N.D.	5	--
Octabromodiphenyl ether	mg/kg	IEC 62321-6:2015, GC-MS	N.D.	5	--
Nonabromodiphenyl ether	mg/kg	IEC 62321-6:2015, GC-MS	N.D.	5	--
Decabromodiphenyl ether	mg/kg	IEC 62321-6:2015, GC-MS	N.D.	5	--
<b>Phthalates</b>					
Dibutyl Phthalate(DBP)	mg/kg	EN14372:2004, GC-MS	N.D.	30	1000
Butyl benzyl phthalate (BBP)	mg/kg	EN14372:2004, GC-MS	N.D.	30	1000
Di-(2-ethylhexyl) Phthalate(DEHP)	mg/kg	EN14372:2004, GC-MS	N.D.	30	1000
Diisobutyl phthalate (DIBP)	mg/kg	EN14372:2004, GC-MS	N.D.	30	1000

This report shall not be altered, increased or deleted. The results shown in this test report refer only to the sample(s) tested. Without written approval of BST, this test report shall not be copied except in full and published as advertisement. BST Physical & Chemical Lab.



# Test Report

Report No : BST16116665A0001Y-1RR-4 Date: Dec.02, 2016

Page 10 of 17

## Test Result(No.8):

Test Item(s)	Unit	Test Method (Reference)	Result	MDL	Limit
Cadmium(Cd)	mg/kg	IEC 62321-5:2013, ICP-AES	N.D.	2	100
Lead(Pb)	mg/kg	IEC 62321-5:2013, ICP-AES	N.D.	2	1000
Mercury(Hg)	mg/kg	IEC 62321-4:2013, ICP-AES	N.D.	2	1000
Hexavalent Chromium(CrVI)	mg/kg	IEC 62321-7-1:2015, UV-Vis	N.D.	2	1000
<b>Sum of PBBs</b>	<b>mg/kg</b>	<b>IEC 62321-6:2015, GC-MS</b>	N.D.	--	<b>1000</b>
Monobromobiphenyl	mg/kg	IEC 62321-6:2015, GC-MS	N.D.	5	--
Dibromobiphenyl	mg/kg	IEC 62321-6:2015, GC-MS	N.D.	5	--
Tribromobiphenyl	mg/kg	IEC 62321-6:2015, GC-MS	N.D.	5	--
Tetrabromobiphenyl	mg/kg	IEC 62321-6:2015, GC-MS	N.D.	5	--
Pentabromobiphenyl	mg/kg	IEC 62321-6:2015, GC-MS	N.D.	5	--
Hexabromobiphenyl	mg/kg	IEC 62321-6:2015, GC-MS	N.D.	5	--
Heptabromobiphenyl	mg/kg	IEC 62321-6:2015, GC-MS	N.D.	5	--
Octabromobiphenyl	mg/kg	IEC 62321-6:2015, GC-MS	N.D.	5	--
Nonabromobiphenyl	mg/kg	IEC 62321-6:2015, GC-MS	N.D.	5	--
Decabromobiphenyl	mg/kg	IEC 62321-6:2015, GC-MS	N.D.	5	--
<b>Sum of PBDEs</b>	<b>mg/kg</b>	<b>IEC 62321-6:2015, GC-MS</b>	N.D.	--	<b>1000</b>
Monobromodiphenyl ether	mg/kg	IEC 62321-6:2015, GC-MS	N.D.	5	--
Dibromodiphenyl ether	mg/kg	IEC 62321-6:2015, GC-MS	N.D.	5	--
Tribromodiphenyl ether	mg/kg	IEC 62321-6:2015, GC-MS	N.D.	5	--
Tetrabromodiphenyl ether	mg/kg	IEC 62321-6:2015, GC-MS	N.D.	5	--
Pentabromodiphenyl ether	mg/kg	IEC 62321-6:2015, GC-MS	N.D.	5	--
Hexabromodiphenyl ether	mg/kg	IEC 62321-6:2015, GC-MS	N.D.	5	--
Heptabromodiphenyl ether	mg/kg	IEC 62321-6:2015, GC-MS	N.D.	5	--
Octabromodiphenyl ether	mg/kg	IEC 62321-6:2015, GC-MS	N.D.	5	--
Nonabromodiphenyl ether	mg/kg	IEC 62321-6:2015, GC-MS	N.D.	5	--
Decabromodiphenyl ether	mg/kg	IEC 62321-6:2015, GC-MS	N.D.	5	--
<b>Phthalates</b>					
Dibutyl Phthalate(DBP)	mg/kg	EN14372:2004, GC-MS	N.D.	30	1000
Butyl benzyl phthalate (BBP)	mg/kg	EN14372:2004, GC-MS	N.D.	30	1000
Di-(2-ethylhexyl) Phthalate(DEHP)	mg/kg	EN14372:2004, GC-MS	N.D.	30	1000
Diisobutyl phthalate (DIBP)	mg/kg	EN14372:2004, GC-MS	N.D.	30	1000

This report shall not be altered, increased or deleted. The results shown in this test report refer only to the sample(s) tested. Without written approval of BST, this test report shall not be copied except in full and published as advertisement. BST Physical & Chemical Lab.



# Test Report

Report No : BST16116665A0001Y-1RR-4 Date: Dec.02, 2016

Page 11 of 17

## Test Result(No.9):

Test Item(s)	Unit	Test Method (Reference)	Result	MDL	Limit
Cadmium(Cd)	mg/kg	IEC 62321-5:2013, ICP-AES	N.D.	2	100
Lead(Pb)	mg/kg	IEC 62321-5:2013, ICP-AES	N.D.	2	1000
Mercury(Hg)	mg/kg	IEC 62321-4:2013, ICP-AES	N.D.	2	1000
Hexavalent Chromium(CrVI)	mg/kg	IEC 62321-7-1:2015, UV-Vis	N.D.	2	1000
<b>Sum of PBBs</b>	<b>mg/kg</b>	<b>IEC 62321-6:2015, GC-MS</b>	N.D.	--	<b>1000</b>
Monobromobiphenyl	mg/kg	IEC 62321-6:2015, GC-MS	N.D.	5	--
Dibromobiphenyl	mg/kg	IEC 62321-6:2015, GC-MS	N.D.	5	--
Tribromobiphenyl	mg/kg	IEC 62321-6:2015, GC-MS	N.D.	5	--
Tetrabromobiphenyl	mg/kg	IEC 62321-6:2015, GC-MS	N.D.	5	--
Pentabromobiphenyl	mg/kg	IEC 62321-6:2015, GC-MS	N.D.	5	--
Hexabromobiphenyl	mg/kg	IEC 62321-6:2015, GC-MS	N.D.	5	--
Heptabromobiphenyl	mg/kg	IEC 62321-6:2015, GC-MS	N.D.	5	--
Octabromobiphenyl	mg/kg	IEC 62321-6:2015, GC-MS	N.D.	5	--
Nonabromobiphenyl	mg/kg	IEC 62321-6:2015, GC-MS	N.D.	5	--
Decabromobiphenyl	mg/kg	IEC 62321-6:2015, GC-MS	N.D.	5	--
<b>Sum of PBDEs</b>	<b>mg/kg</b>	<b>IEC 62321-6:2015, GC-MS</b>	N.D.	--	<b>1000</b>
Monobromodiphenyl ether	mg/kg	IEC 62321-6:2015, GC-MS	N.D.	5	--
Dibromodiphenyl ether	mg/kg	IEC 62321-6:2015, GC-MS	N.D.	5	--
Tribromodiphenyl ether	mg/kg	IEC 62321-6:2015, GC-MS	N.D.	5	--
Tetrabromodiphenyl ether	mg/kg	IEC 62321-6:2015, GC-MS	N.D.	5	--
Pentabromodiphenyl ether	mg/kg	IEC 62321-6:2015, GC-MS	N.D.	5	--
Hexabromodiphenyl ether	mg/kg	IEC 62321-6:2015, GC-MS	N.D.	5	--
Heptabromodiphenyl ether	mg/kg	IEC 62321-6:2015, GC-MS	N.D.	5	--
Octabromodiphenyl ether	mg/kg	IEC 62321-6:2015, GC-MS	N.D.	5	--
Nonabromodiphenyl ether	mg/kg	IEC 62321-6:2015, GC-MS	N.D.	5	--
Decabromodiphenyl ether	mg/kg	IEC 62321-6:2015, GC-MS	N.D.	5	--
<b>Phthalates</b>					
Dibutyl Phthalate(DBP)	mg/kg	EN14372:2004, GC-MS	N.D.	30	1000
Butyl benzyl phthalate (BBP)	mg/kg	EN14372:2004, GC-MS	N.D.	30	1000
Di-(2-ethylhexyl) Phthalate(DEHP)	mg/kg	EN14372:2004, GC-MS	N.D.	30	1000
Diisobutyl phthalate (DIBP)	mg/kg	EN14372:2004, GC-MS	N.D.	30	1000

This report shall not be altered, increased or deleted. The results shown in this test report refer only to the sample(s) tested. Without written approval of BST, this test report shall not be copied except in full and published as advertisement. BST Physical & Chemical Lab.



# Test Report

Report No : BST16116665A0001Y-1RR-4 Date: Dec.02, 2016

Page 12 of 17

## Test Result(No.10):

Test Item(s)	Unit	Test Method (Reference)	Result	MDL	Limit
Cadmium(Cd)	mg/kg	IEC 62321-5:2013, ICP-AES	N.D.	2	100
Lead(Pb)	mg/kg	IEC 62321-5:2013, ICP-AES	371	2	1000
Mercury(Hg)	mg/kg	IEC 62321-4:2013, ICP-AES	N.D.	2	1000
Hexavalent Chromium(CrVI)	mg/kg	IEC 62321-7-1:2015, UV-Vis	N.D.	2	1000
<b>Sum of PBBs</b>	<b>mg/kg</b>	<b>IEC 62321-6:2015, GC-MS</b>	--	--	<b>1000</b>
Monobromobiphenyl	mg/kg	IEC 62321-6:2015, GC-MS	--	5	--
Dibromobiphenyl	mg/kg	IEC 62321-6:2015, GC-MS	--	5	--
Tribromobiphenyl	mg/kg	IEC 62321-6:2015, GC-MS	--	5	--
Tetrabromobiphenyl	mg/kg	IEC 62321-6:2015, GC-MS	--	5	--
Pentabromobiphenyl	mg/kg	IEC 62321-6:2015, GC-MS	--	5	--
Hexabromobiphenyl	mg/kg	IEC 62321-6:2015, GC-MS	--	5	--
Heptabromobiphenyl	mg/kg	IEC 62321-6:2015, GC-MS	--	5	--
Octabromobiphenyl	mg/kg	IEC 62321-6:2015, GC-MS	--	5	--
Nonabromobiphenyl	mg/kg	IEC 62321-6:2015, GC-MS	--	5	--
Decabromobiphenyl	mg/kg	IEC 62321-6:2015, GC-MS	--	5	--
<b>Sum of PBDEs</b>	<b>mg/kg</b>	<b>IEC 62321-6:2015, GC-MS</b>	--	--	<b>1000</b>
Monobromodiphenyl ether	mg/kg	IEC 62321-6:2015, GC-MS	--	5	--
Dibromodiphenyl ether	mg/kg	IEC 62321-6:2015, GC-MS	--	5	--
Tribromodiphenyl ether	mg/kg	IEC 62321-6:2015, GC-MS	--	5	--
Tetrabromodiphenyl ether	mg/kg	IEC 62321-6:2015, GC-MS	--	5	--
Pentabromodiphenyl ether	mg/kg	IEC 62321-6:2015, GC-MS	--	5	--
Hexabromodiphenyl ether	mg/kg	IEC 62321-6:2015, GC-MS	--	5	--
Heptabromodiphenyl ether	mg/kg	IEC 62321-6:2015, GC-MS	--	5	--
Octabromodiphenyl ether	mg/kg	IEC 62321-6:2015, GC-MS	--	5	--
Nonabromodiphenyl ether	mg/kg	IEC 62321-6:2015, GC-MS	--	5	--
Decabromodiphenyl ether	mg/kg	IEC 62321-6:2015, GC-MS	--	5	--
<b>Phthalates</b>					
Dibutyl Phthalate(DBP)	mg/kg	EN14372:2004, GC-MS	--	30	1000
Butyl benzyl phthalate (BBP)	mg/kg	EN14372:2004, GC-MS	--	30	1000
Di-(2-ethylhexyl) Phthalate(DEHP)	mg/kg	EN14372:2004, GC-MS	--	30	1000
Diisobutyl phthalate (DIBP)	mg/kg	EN14372:2004, GC-MS	--	30	1000

This report shall not be altered, increased or deleted. The results shown in this test report refer only to the sample(s) tested. Without written approval of BST, this test report shall not be copied except in full and published as advertisement. BST Physical & Chemical Lab.



# Test Report

Report No : BST16116665A0001Y-1RR-4 Date: Dec.02, 2016

Page 13 of 17

## Test Result(No.11):

Test Item(s)	Unit	Test Method (Reference)	Result	MDL	Limit
Cadmium(Cd)	mg/kg	IEC 62321-5:2013, ICP-AES	N.D.	2	100
Lead(Pb)	mg/kg	IEC 62321-5:2013, ICP-AES	N.D.	2	1000
Mercury(Hg)	mg/kg	IEC 62321-4:2013, ICP-AES	N.D.	2	1000
Hexavalent Chromium(CrVI)	mg/kg	IEC 62321-7-1:2015, UV-Vis	N.D.	2	1000
<b>Sum of PBBs</b>	<b>mg/kg</b>	<b>IEC 62321-6:2015, GC-MS</b>	<b>N.D.</b>	<b>--</b>	<b>1000</b>
Monobromobiphenyl	mg/kg	IEC 62321-6:2015, GC-MS	N.D.	5	--
Dibromobiphenyl	mg/kg	IEC 62321-6:2015, GC-MS	N.D.	5	--
Tribromobiphenyl	mg/kg	IEC 62321-6:2015, GC-MS	N.D.	5	--
Tetrabromobiphenyl	mg/kg	IEC 62321-6:2015, GC-MS	N.D.	5	--
Pentabromobiphenyl	mg/kg	IEC 62321-6:2015, GC-MS	N.D.	5	--
Hexabromobiphenyl	mg/kg	IEC 62321-6:2015, GC-MS	N.D.	5	--
Heptabromobiphenyl	mg/kg	IEC 62321-6:2015, GC-MS	N.D.	5	--
Octabromobiphenyl	mg/kg	IEC 62321-6:2015, GC-MS	N.D.	5	--
Nonabromobiphenyl	mg/kg	IEC 62321-6:2015, GC-MS	N.D.	5	--
Decabromobiphenyl	mg/kg	IEC 62321-6:2015, GC-MS	N.D.	5	--
<b>Sum of PBDEs</b>	<b>mg/kg</b>	<b>IEC 62321-6:2015, GC-MS</b>	<b>N.D.</b>	<b>--</b>	<b>1000</b>
Monobromodiphenyl ether	mg/kg	IEC 62321-6:2015, GC-MS	N.D.	5	--
Dibromodiphenyl ether	mg/kg	IEC 62321-6:2015, GC-MS	N.D.	5	--
Tribromodiphenyl ether	mg/kg	IEC 62321-6:2015, GC-MS	N.D.	5	--
Tetrabromodiphenyl ether	mg/kg	IEC 62321-6:2015, GC-MS	N.D.	5	--
Pentabromodiphenyl ether	mg/kg	IEC 62321-6:2015, GC-MS	N.D.	5	--
Hexabromodiphenyl ether	mg/kg	IEC 62321-6:2015, GC-MS	N.D.	5	--
Heptabromodiphenyl ether	mg/kg	IEC 62321-6:2015, GC-MS	N.D.	5	--
Octabromodiphenyl ether	mg/kg	IEC 62321-6:2015, GC-MS	N.D.	5	--
Nonabromodiphenyl ether	mg/kg	IEC 62321-6:2015, GC-MS	N.D.	5	--
Decabromodiphenyl ether	mg/kg	IEC 62321-6:2015, GC-MS	N.D.	5	--
<b>Phthalates</b>					
Dibutyl Phthalate(DBP)	mg/kg	EN14372:2004, GC-MS	N.D.	30	1000
Butyl benzyl phthalate (BBP)	mg/kg	EN14372:2004, GC-MS	N.D.	30	1000
Di-(2-ethylhexyl) Phthalate(DEHP)	mg/kg	EN14372:2004, GC-MS	N.D.	30	1000
Diisobutyl phthalate (DIBP)	mg/kg	EN14372:2004, GC-MS	N.D.	30	1000

This report shall not be altered, increased or deleted. The results shown in this test report refer only to the sample(s) tested. Without written approval of BST, this test report shall not be copied except in full and published as advertisement. BST Physical & Chemical Lab.



# Test Report

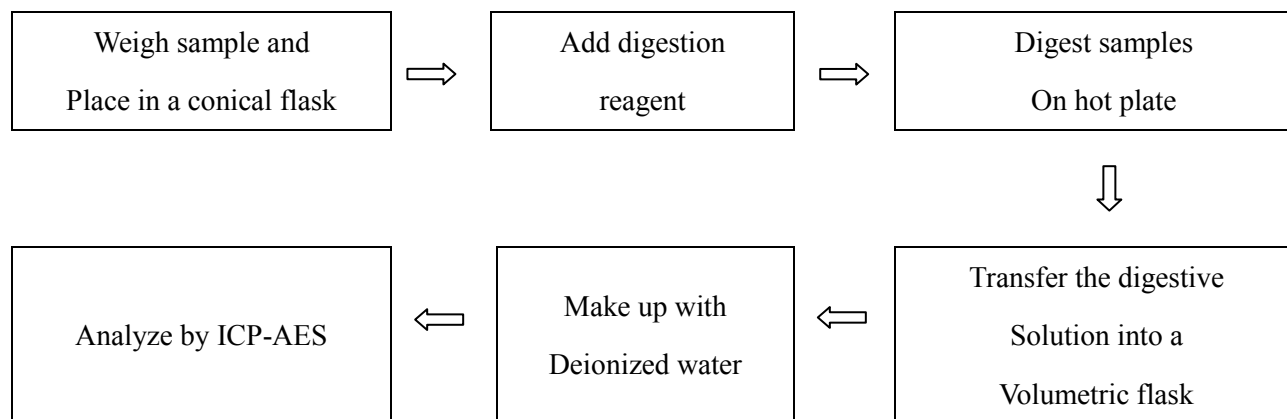
Report No : BST16116665A0001Y-1RR-4 Date: Dec.02, 2016

Page 14 of 17

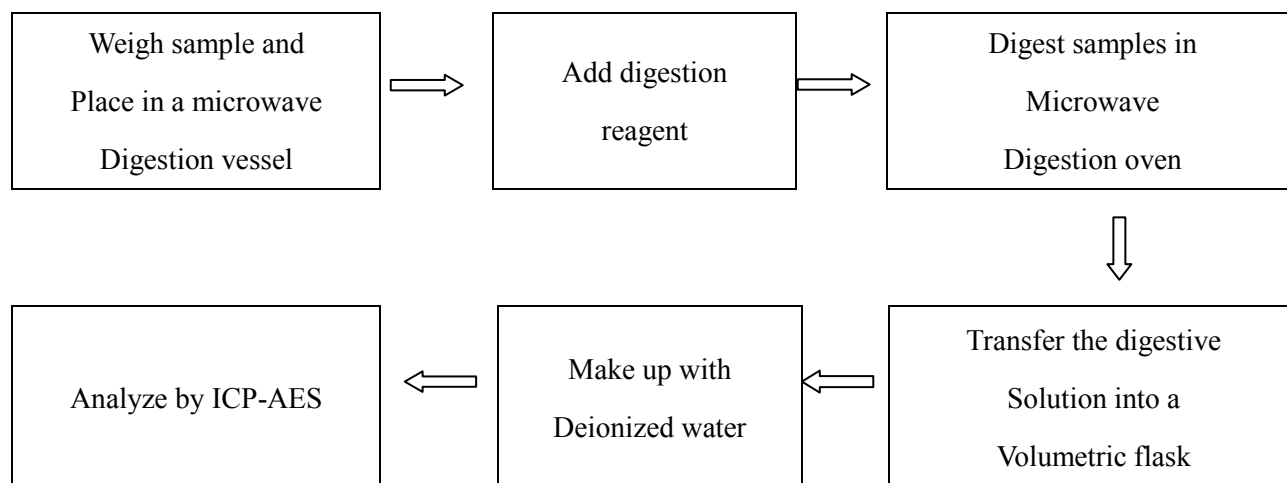
- Note:**
1. mg/kg= ppm
  2. N.D.= Not Detected(<MDL)
  3. MDL = Method Detection Limit
  4. -- = No Testing

## Test Process:

### 1. Test for Cd/Pb Content



### 2. Test for Hg Content



This report shall not be altered, increased or deleted. The results shown in this test report refer only to the sample(s) tested. Without written approval of BST, this test report shall not be copied except in full and published as advertisement. BST Physical & Chemical Lab.



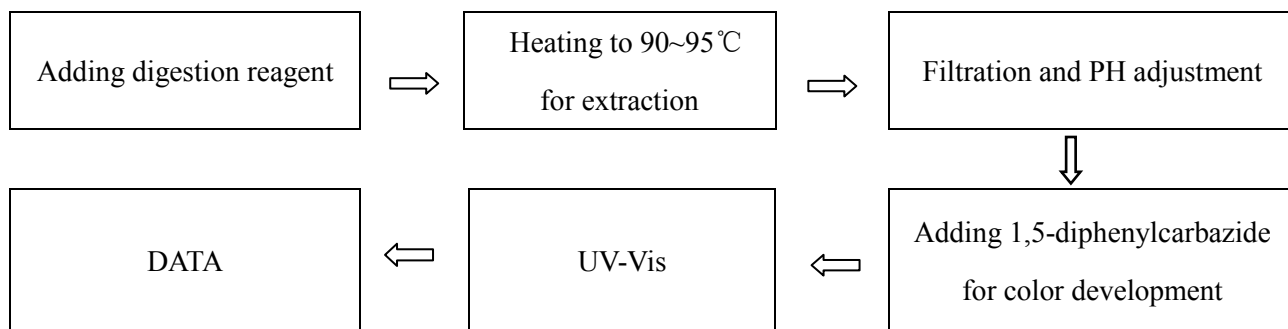
# Test Report

Report No : BST16116665A0001Y-1RR-4 Date: Dec.02, 2016

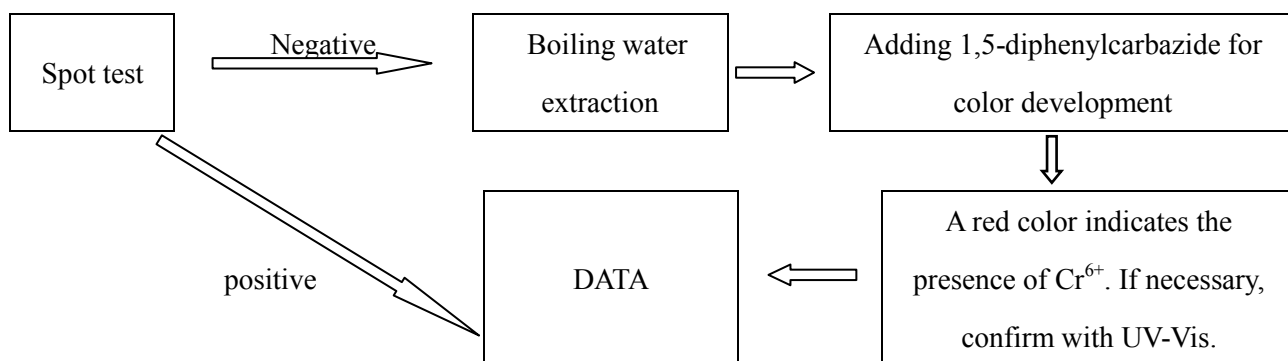
Page 15 of 17

## 3. Test for Chromium (VI) Content

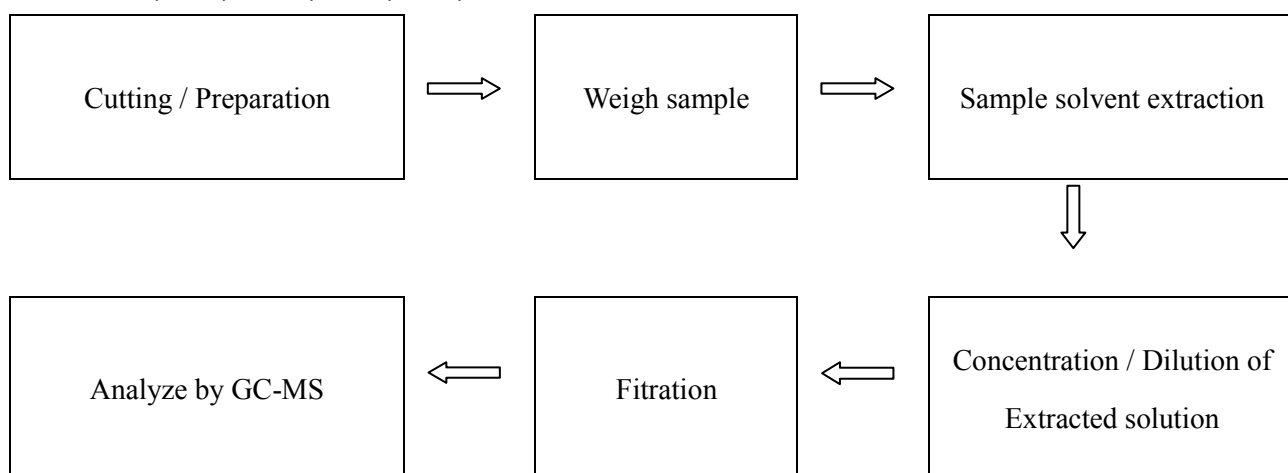
Nonmetallic material



Metallic material



## 4. Test for DBP, BBP, DEHP, DIBP, PBB, PBDE Content



This report shall not be altered, increased or deleted. The results shown in this test report refer only to the sample(s) tested. Without written approval of BST, this test report shall not be copied except in full and published as advertisement. BST Physical & Chemical Lab.



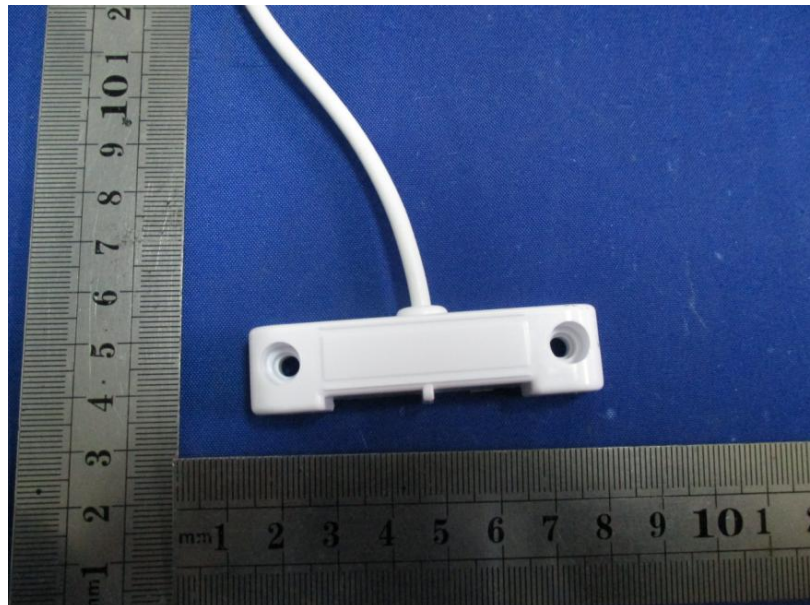
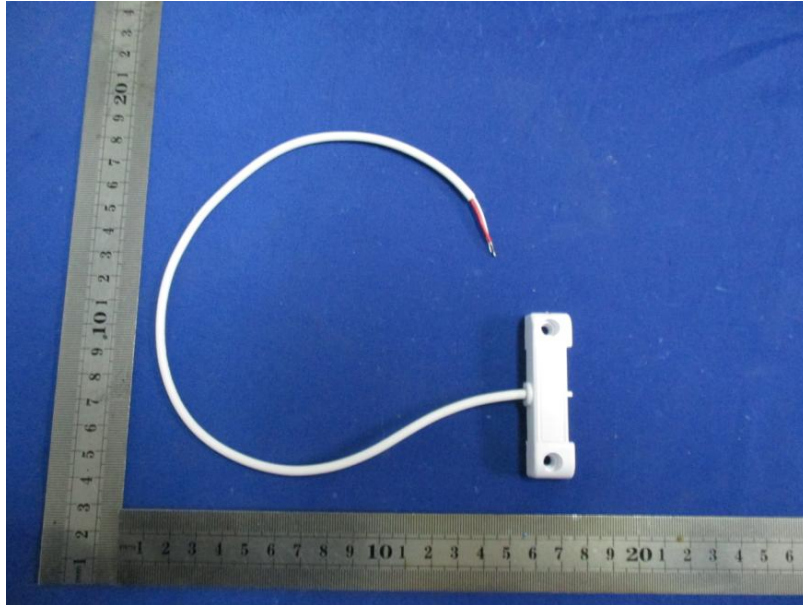


# Test Report

Report No : BST16116665A0001Y-1RR-4 Date: Dec.02, 2016

Page 16 of 17

## Sample Photo:



This report shall not be altered, increased or deleted. The results shown in this test report refer only to the sample(s) tested. Without written approval of BST, this test report shall not be copied except in full and published as advertisement. BST Physical & Chemical Lab.

**Dongguan BST Testing Co., Ltd.**

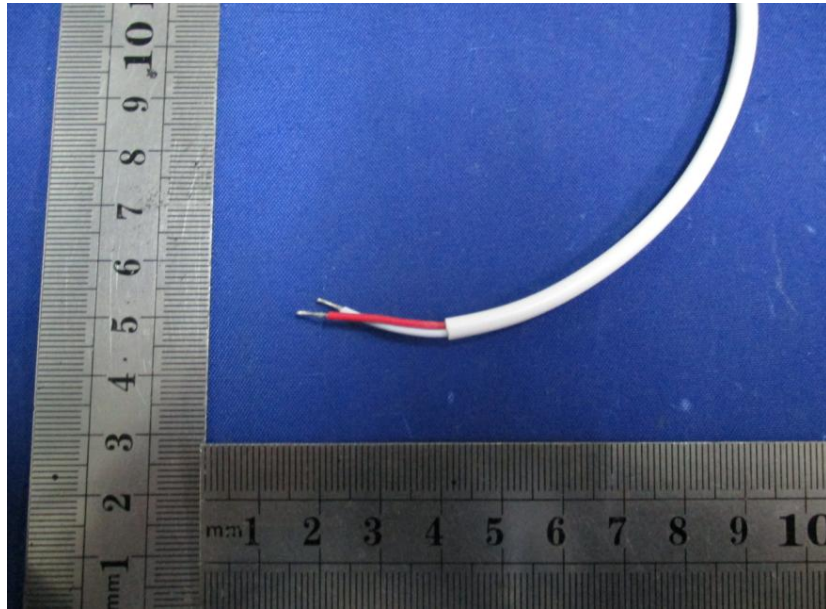
A1201-1204 Xinsanqi Of Dongbao Road, Dongcheng District, Tel:400-882-9628 Fax:86-769-23020106  
Dongguan, Guangdong, China E-mail:christina@bst-lab.com Http://www.bst-lab.com Complaints hotline:86-755-26747756



# Test Report

Report No : BST16116665A0001Y-1RR-4 Date: Dec.02, 2016

Page 17 of 17



\*\*\* End of Report \*\*\*

This report shall not be altered, increased or deleted. The results shown in this test report refer only to the sample(s) tested. Without written approval of BST, this test report shall not be copied except in full and published as advertisement. BST Physical & Chemical Lab.

**Dongguan BST Testing Co., Ltd.**

A1201-1204 Xinsanqi Of Dongbao Road, Dongcheng District, Tel:400-882-9628 Fax:86-769-23020106  
Dongguan, Guangdong, China E-mail:christina@bst-lab.com Http://www.bst-lab.com Complaints hotline:86-755-26747756